

INSTRUCTIONS



MODEL : BMW R 1200 GS

PRODUCT : REAR HUGGER

CODE : RH-BMWR1200GS

CONTENTS

Plastic Wing
2 pcs. M5X25 screws
2 pcs. Tire ups

MATERIAL SPECIFICATIONS

The product's material, made of ABS plastic with acrylic exterior layer, can be placed on your bike without requiring painting but if you want it painted, all paint companies have equivalent machinery at their disposal. If you want to paint it yourself, you should contact them to inform you on what you will need and how to do it.

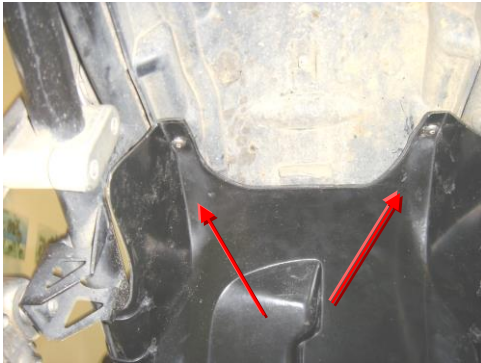


Photo No 1

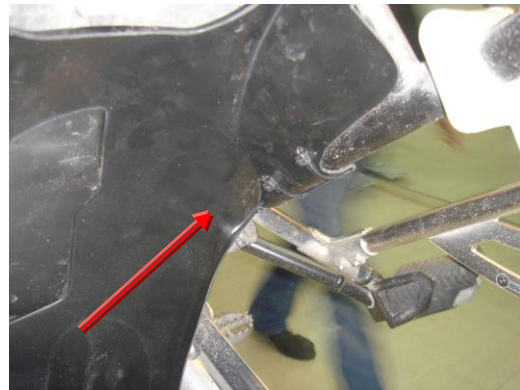


Photo No 2

Placement

OUR COMPANY SUGGESTS THE INSTALLATION BE CARRIED OUT AT A WORKSHOP OR BY QUALIFIED STAFF

- Remove the two screws beneath the canopy of the rear wheel (Photo No 1).
- Remove the protective tape from the hugger and place it so that you can put the two screws back on. (Photo No 1).
- Pass the tire ups on the side holes to tie onto the frame tube and tighten very well (Photo No 1).

