

INSTRUCTIONS



MODEL : HONDA CROSSTOURER

PRODUCT : RADIATOR GRILL

CODE : RG-HCROS

CONTENTS

Grill
8pcs. Foam tape
2pcs. M6x20 Bolts
2pcs. M6 Nuts
2pcs. M6 Washers

MATERIAL SPECIFICATIONS

The product is made of 1,5 mm DCP iron plate and grid of aluminum 1,3 mm. All are painted with powder paint (electrostatic) and are ready to be installed.



Photo No1

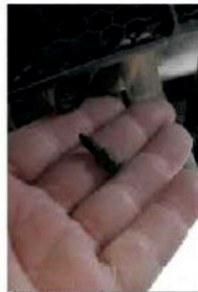


Photo No2



Photo No3



Photo No4



Photo No5



Photo No6



Photo No7



Photo No8



Photo No9

Placement

OUR COMPANY SUGGESTS THE INSTALLATION BE CARRIED OUT AT A WORKSHOP OR BY QUALIFIED STAFF

- Remove the side tap and the clips from the bottom part of the radiator. Then take off the plastic part at the front but only from the one side as shown in Photos No 1-2-3.
- Remove the bolt holding the radiator on the left side up (Photo No 4).
- Place the grill upside down and stick the foam tapes across its perimeter (Photo No 5).
- Slide the grill through the front plastic guard so that the upper part of the grill attaches at the base of the radiator and screw the bolt holding them together (Photo No 6).
- Put the plastic guard back in position and instead of using clips, use the nuts that are included in the fitting kit (Photos No 8-9).
- Put the side plastic part back in position and you are done.

