

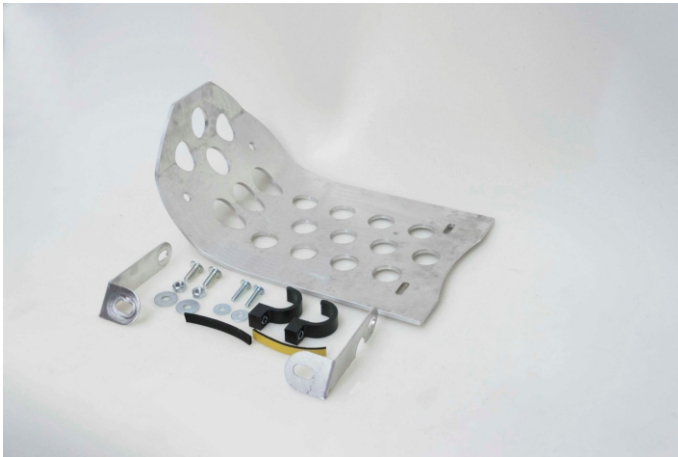


C-RACER
www.c-racer.com

INSTRUCTION

Model	Product	Code
Royal Enfield Interceptor 650 Royal Enfield Continental GT 650	Engine Guard	EG-RE

You are advised to read the instructions carefully, before you proceed to any changes.
Any modifications on your motorcycle should be performed by specialized personnel,
however the installation process of this product is quite easy if you follow the instructions below.



CONTENTS

- 1 X Engine Guard (aluminio)
- 2 X metallic plate (inox L-EG-RE1 & L-EG-RE2)
- 2 X plastic plate (PF32)
- 2 X screws M6X25 (allen-round head-washer)
- 2 X screws M8X20 (allen-round head-washer)
- 2 X safety nuts M8
- 2 X washer (8x23)
- 2 X washer (6x18)
- 2 X insulating fittings (2x10x80)



Undo the screw that holds together the engine,
on the lower part.
On the inside you will notice that there is a nut
with a fat washer – we will use these
further ahead.

1



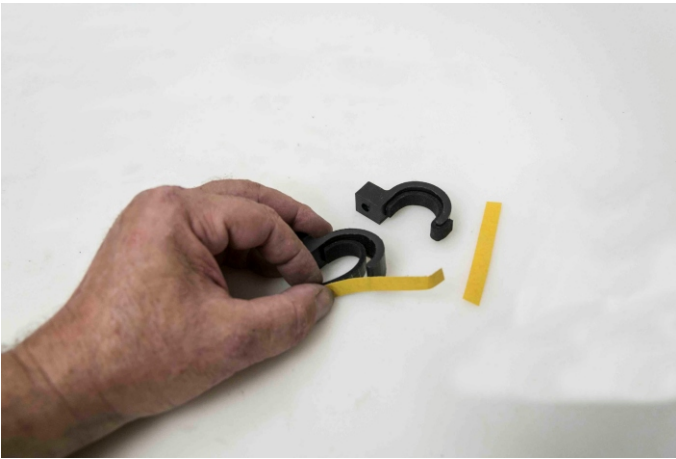
2-3



Place the bracket with the notch on the left side of the motorcycle, as the photo shows (top left).
Repeat the same procedure on the right hand side as well .
Place the grill in place, making sure the metal supports have the right angle and continue with tightening them on.
Place the notched metal support on the left-hand side of the motorcycle as shown in the photo (left).

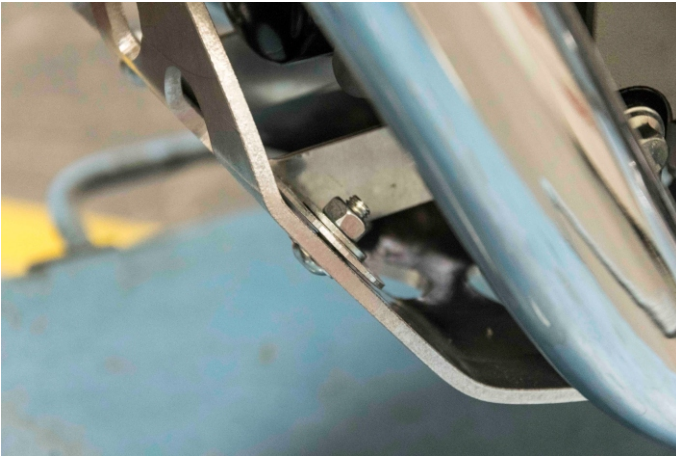


4-5



Stick the foam tapes on the plastic clips as shown in the left photo above.
Then place the clips on the bottom half of the motorcycle framework, as shown in the right photo above.

6-7



Put the grill in place and tighten the front screws (M8X20) as shown in the above left-hand photo.
Place your hand on the grill so that you can adjust the plastic cover in the right spot before you tighten it with the (M6X25) screws. Make sure you have securely tightened all the screws.



The end result should appear as in the photo
Thank you for choosing one of our products.

The product is for race use only

For any further information please do not hesitate to contact us: Tel.: +30 2108075387 Email: info@c-racer.com