



www.c-racer.com

INSTRUCTION

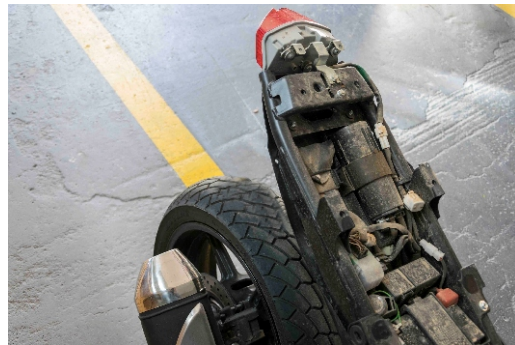
Model	Product	code
SUZUKI SV 650 VSTROM 2016	REAR HUGER	SCR- SVFT

CONTENTS

- 2x Support bars
- 2x screws M6X12 cross
- 2x screws M6X15 allen oval washer
- 2x safety nuts M6
- 2 x washers M6X18
- 8 x screws M5X15 allen oval washer
- 8 x washers M5x15
- 8 x nuts M5



Remove side and rear fairing.



You can leave the back light as it is.



Place the support bars on each side. They should be fitted between the plastic dome and the subframe, as indicated in the picture.



Place the seat. Followed by attaching the side number plates. Adjust the number plates position (+-2cm by sliding towards or backwards) and mark-drill the top bolts so you can hold the plates on the seat. Then mark drill the 2 lower bolts with the side bracket. Do the same for the other side.

After fitting the seat on the front end, put the 2 screws on the top and then screw the side covers on the supports bases that you have already installed.

Your saddle is ready! Thank you for choosing our company's products!

The product is for race use only

For any further information please do not hesitate to contact us: Tel.: +30 2108075387 Email: info@c-racer.com