



C-RACER
www.c-racer.com

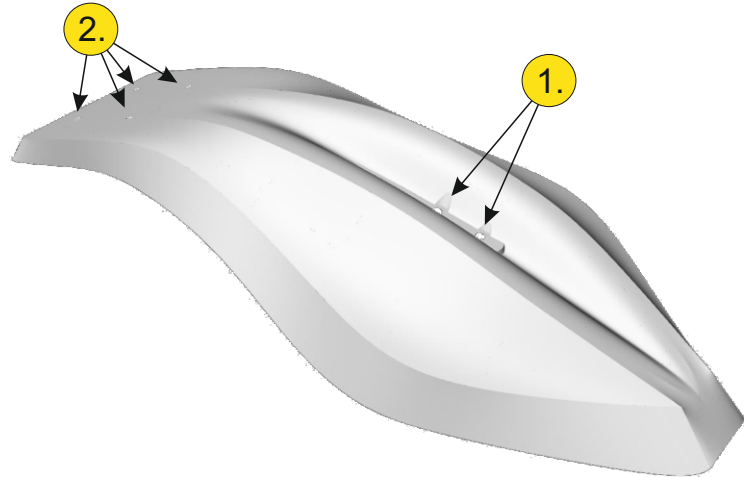
INSTRUCTION

Page 1/2

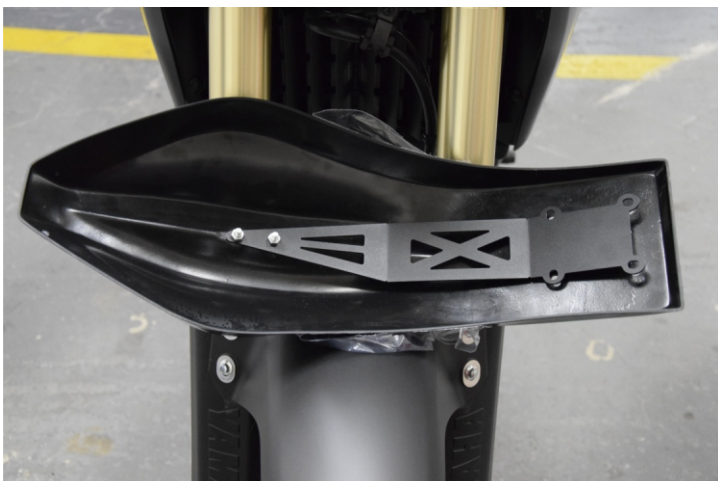
Model	Product	Code
YAMAHA Tenere 700/T7	Front Fender (enduro)	FFE-YT7

CONTENTS

1. 1pcs Plastic Fender
2. 1pcs metal base
3. 6pcs screws M6X15 (a allen-oval-washer)
4. 2pcs safety Nuts M6
5. 2pcs washers 6X18



Remove the base that holds the front brake hoses from the bottom of the lower steering wheel. Keep the rubber stopper and the two screws, in case you want to restore the original form of the motorcycle. As you remove the base you will see on the front of the steering wheel that there are two other holes with spout and the new fairing will be supported on them.



From the new fender, remove the protective film, where the two holes are, design No. 1. Turn it upside down, place the base as shown in the photo and tighten the front screws, which are in the package, but do not tighten them yet.



Remove all protective film.
Put the fender in place. The base with the tubes should be under the fender. Tighten the two front screws without tightening them. Then place the base that holds the tubes under the base on the rear screws and screw them all together. Make sure the fender is aligned and tighten all screws firmly.



Finally, move the bracket that holds the ABS cable (pictured left) so that the cable is stretched and does not touch the fender. Check that by twisting the steering wheel it does not find any cables or hoses.



This will be your end result. Enjoy your dirty rides!

The product is for race use only

For any further information please do not hesitate to contact us: Tel.: +30 2108075387 Email: info@c-racer.com