



**C-RACER**  
www.c-racer.com

# INSTRUCTION

Model	Product	Code
Yamaha XSR 700 2016+	License Plate Holder	NP-YXSR

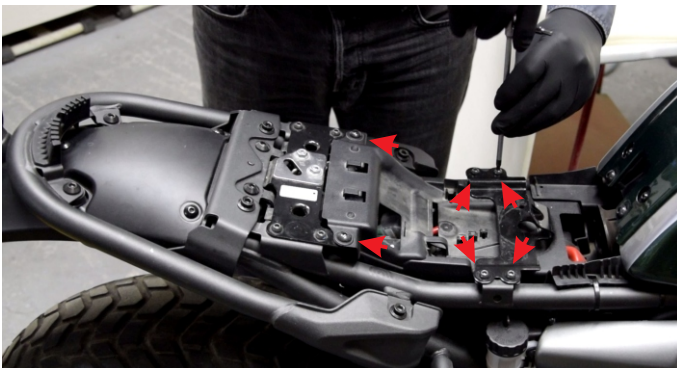
You are advised to read the instructions carefully, before you proceed to any changes.  
Any modifications on your motorcycle should be performed by specialized personnel – however the installation process of this product is quite easy if you follow the instructions below.



## CONTENTS

- 1 X metallic plate
- 1 X license plate holder
- 1 X metallic plate for the original blinkers
- 1 X metallic plate for common blinkers
- 1 X license plate light
- 1 X plastic cover
- 14 X screws M6X15 (allen-round-washers)
- 12 X washers 6X18
- 12 X safety nuts M6
- 2 X screws M6X20 (allen-round-washers)
- 2 X rubbers (10X18X6)
- 2 X screws M4X15 (allen-round-washers)
- 2 X nuts M4 (with washer)
- 4 X slide clips M6
- 4 X tireups 200X3,5

1  
&  
2



Remove the screws (see red arrows in the above photo) and then lift/remove the front plastic cover so that you have access to the cables underneath it.



There are 3 connectors (2 gray and 1 black). There's also a white triple connector – disengage them all so that you can remove the rear fender as a whole.

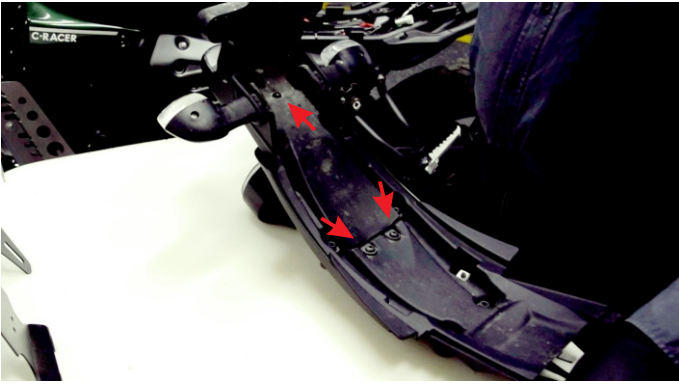
3



Remove the four screws, as shown in the photo on the left. Now you should be able to remove completely the rear fender including the tail light. Remove it carefully paying attention to remove simultaneously the turn light cables and the cables of the tail light and the license plate light.



4  
&  
5



Turn the cover upside down and remove all three screws as shown in the above photo.  
You will see a small plate covering the cables



Remove the 5 screws that hold together the rear fender – along with the rear fender should be the rear tail light.

6  
&  
7



Remove the two plates and the cables holding the turn lights and the license plate light .

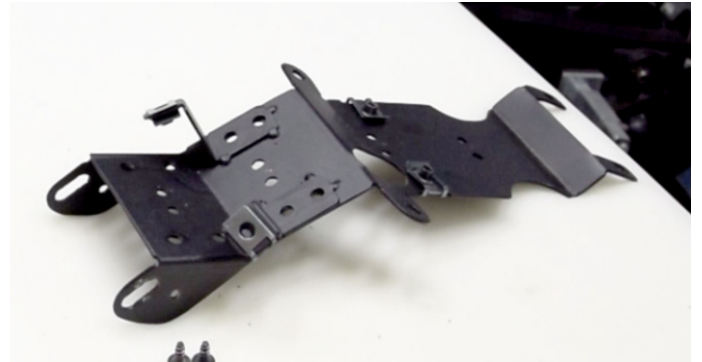


If you use the original turn lights , remove them from the base plate. There is a plastic safety that holds the turn lights – remove that first using a screwdriver and then remove the turn lights.

8  
&  
9

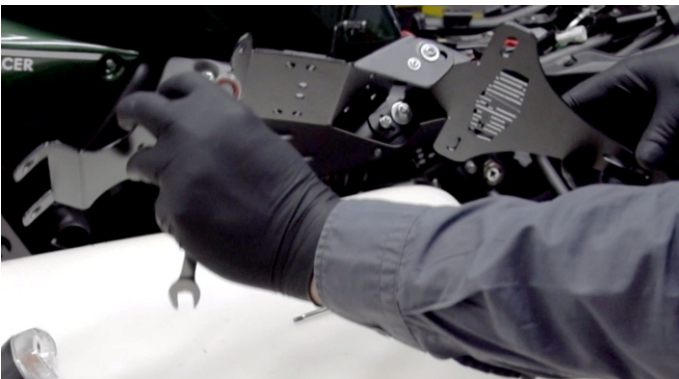


Place the turn lights you have chosen to use on their plate.  
In the original turn lights the one with the black connector is the right turn light



Place the clips as shown in the photo above – the two rear ones will be screwed on top and the front ones should be screwed on underneath.

10  
&  
11

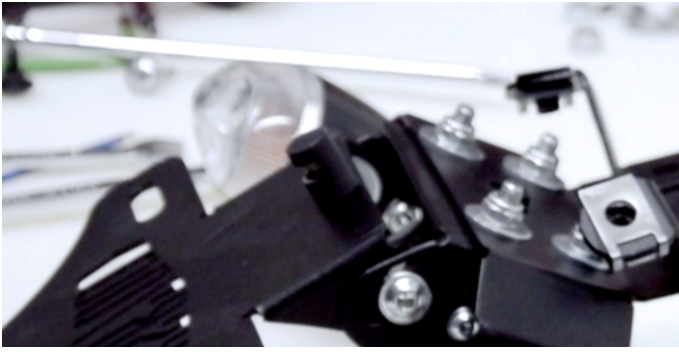


Position the plate holder in its plate and screw it on temporarily – you can make adjustments once you have finished.

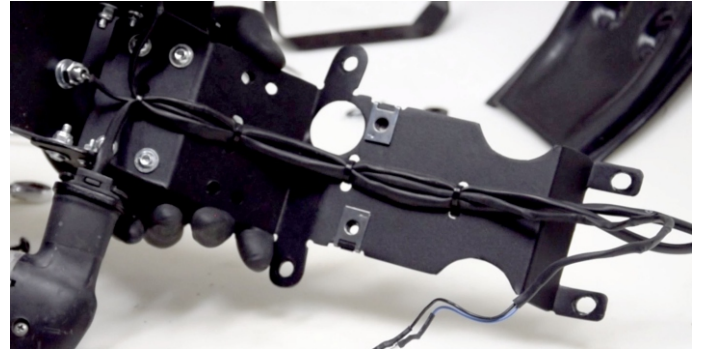


Screw on the plate with the turn lights which you have already put together.

12  
&  
13



Screw on the new tail light found in the contents provided, and make sure the light shines downwards before you screw it tight in position.



Use the tire ups to hold the cables together, as you see in the above photo.

14  
&  
15



Screw on the rear fender on the new plate using the two holes as shown in the above photo.



Place the fender on the back wheel and slide the cables through the same hole from which you pulled them out earlier.

16  
&  
17



Slide the screw through and under the rear hole on the new plate, and then place the rubber in the same position from which you removed it earlier.



First place the two rear plates using the rubber bands, and then screw tight at the front as shown by the arrows in the above photo.

18



Connect the connectors to their original position – the only difference now should be the cable of the tail light.  
It has two nails that fit into the old connector – place the blue one with blue one and the black one with the black respectively. Push the nails through thoroughly.

19



Place the cover in position and screw on the first the two rear screws and then the front ones so that the nut is on the upper side.

20



Make sure the license plate holder is tilted at the angle you prefer before you screw it tight in place.  
**CAUTION:** do not try to fold the license plate without having removed the screws.

The end result is as shown in the photos above.

Thank you for choosing one of our products.

You may watch the installation video at the following link: : <https://youtu.be/A6TJ9QKZsjl>

**The product is for race use only**

For any further information please do not hesitate to contact us: Tel.: +30 2108075387 Email: [info@c-racer.com](mailto:info@c-racer.com)